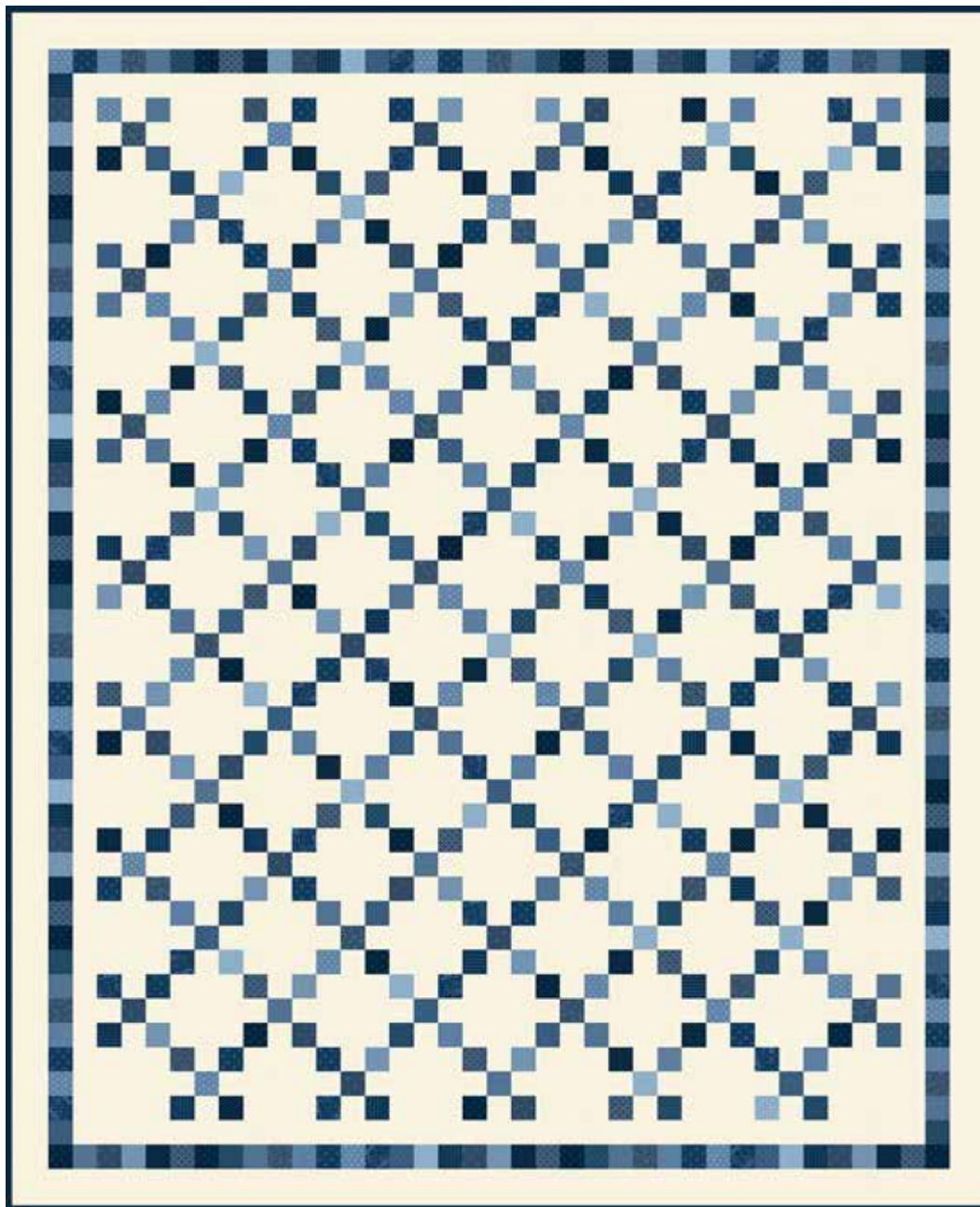


Seven Seas

KATHY HALL



Out of the Blue Quilt
designed by
Janet Houts

Quilt Size: **80" x 98"**

andoverfabrics.com

About Seven Seas

Kathy has curated this selection of timeless prints ranging from the late 1800s to the early 1900s from her personal fabric stash. Still loved today, these prints have been colored in a calming selection of blue fabrics that she wanted to share with you.

andover



makower.uk

Free Pattern Download Available

1384 Broadway New York, NY 10018
Tel. (800) 223-5678 • andoverfabrics.com

Out of the Blue Quilt



Introducing Andover Fabrics new collection: **SEVEN SEAS** by Kathy Hall

Quilt designed by Janet Houts

Quilt finishes 80" x 98"

77 Nine Patch Blocks: 6" x 6"

Blue and white quilts have been a favorite for years, and the ubiquitous Nine Patch block has been part of quilting history since the late 1800s. Often it is one of the first patterns that novice quilters attempt. This scrappy queen-size version is framed nicely with a strip-pieced border.

Cutting Directions

Note: Read assembly directions before cutting patches. All measurements are cut sizes and include 1/4" seam allowances. A fat 1/4 is an 18" x 20"-22" cut. Borders are cut the exact lengths required plus 1/4" seam allowances. WOF designates the width of fabric from selvedge to selvedge (approximately 42" wide).

Fabric A

Cut (2) outer side borders 3 1/2" x 92 1/2", cut lengthwise
Cut (2) outer top/bottom borders 3 1/2" x 80 1/2", cut lengthwise
Cut (2) inner side borders 2 1/2" x 84 1/2", cut lengthwise
Cut (2) inner t/b borders 2 1/2" x 70 1/2", cut lengthwise
Cut (77) squares 6 1/2" x 6 1/2"
Cut (20) strips 2 1/2" x 21"
Cut (40) strips 2 1/2" x 11"

Fabric B

Cut (10) strips 2 1/2" x WOF for binding
Cut (2) strips 2 1/2" x 21"
Cut (4) strips 2 1/2" x 11"
Cut (2) squares 2 1/2" x 2 1/2" (for pieced border)

14 Blues

From each:
Cut (2-3) strips 2 1/2" x 21" (38 total)
Cut (4) strips 2 1/2" x 11"

Backing

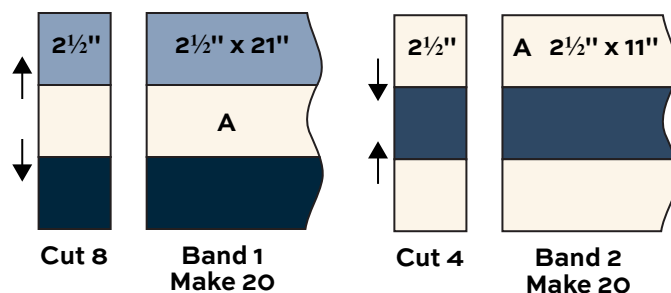
Cut (2) panels 42" x 102", pieced to fit quilt top with overlap on all sides

Fabric Requirements

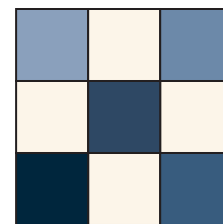
		Yardage	Fabric
Fabric A	blocks, border	5 1/2 yards	9014-L
Fabric B	blocks, binding	1 yard	9314-B
14 Blues	blocks	fat 1/4 yard ea.	
	9300-B 9301-B 9302-B 9303-B 9304-B		
	9306-B 9307-B 9308-B 9309-B1 9310-B		
	9311-B 9312-B 9313-B 9315-B		
Backing		6 yards	9305-B

Making the Quilt

- The pieced blocks use strip-piecing methods. Referring to the Band diagrams, join blue strips and Fabric A strips in the order indicated, noting the lengths of strips in each band. Use different combinations of blue prints so that no band is like any other. Make 20 Band 1 with 2 1/2" x 21" strips, pressing seam allowances away from the center Fabric A strip. Cut each Band 1 into 8 segments, each 2 1/2" wide. Make 20 Band 2 with 2 1/2" x 11" strips, pressing seams toward the center blue strip. Cut 4 segments from each Band 2.



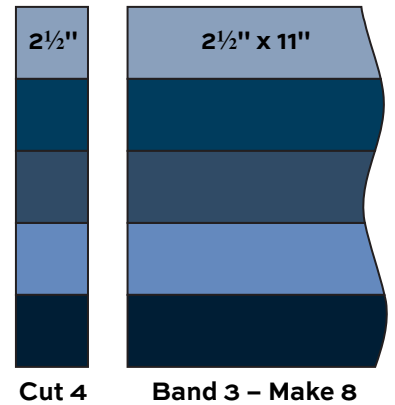
- Referring to the Nine Patch diagram, join 2 Band 1 segments with 1 Band 2 segment, being careful that no blue print is used twice in the same block. Make a total of 77 blocks. There will be a few segments leftover.



Nine Patch – Make 77

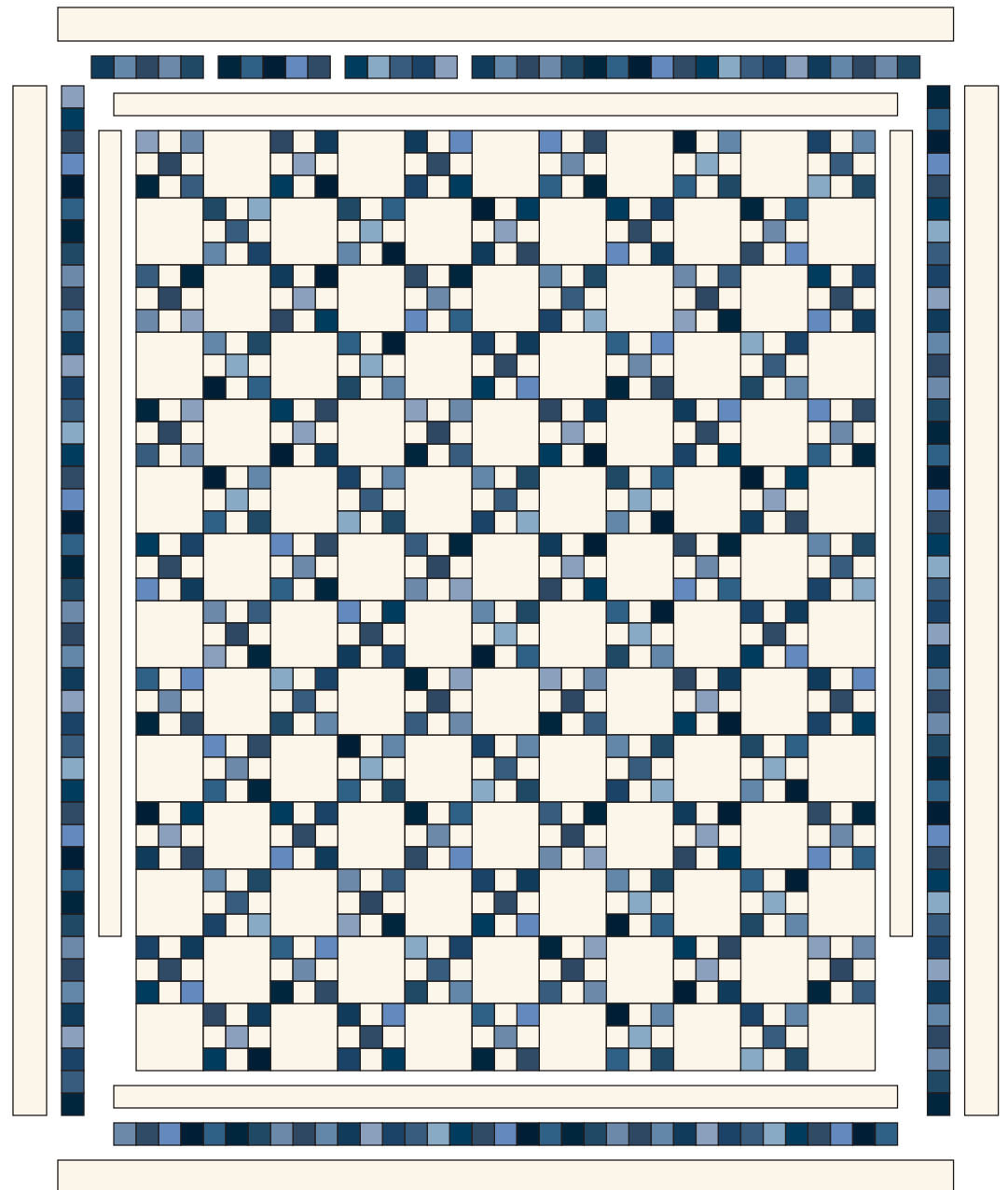
Out of the Blue Quilt

3. Join 5 different blue $2\frac{1}{2}$ " x 11" strips to make a Band 3. Make 8 Band 3. Cut each band into 4 segments. You should have 32 Band 3 segments. Set aside for the border.
4. Referring to the Quilt Diagram, arrange the blocks and Fabric A $6\frac{1}{2}$ " squares in 14 horizontal rows, distributing the blocks so the same blue fabric is not adjacent to itself. Join 6 Nine Patch blocks alternately with 5 Fabric A $6\frac{1}{2}$ " squares to make row 1. Press seam allowances toward the white squares. Make 7 rows like this. Join 6 Fabric A squares with 5 blocks to make row 2. Make 7 rows like this. Join the rows, alternating types.
5. Sew inner Fabric A borders to the sides of the quilt, and then to the top and bottom.
6. Join 7 Band 3 segments end to end and sew to the top of the quilt. Repeat for the bottom. Join 9 Band 3 segments end to end. Sew a Fabric B $2\frac{1}{2}$ " square at one end. Sew to the side of the quilt. Repeat on the opposite side.
7. Sew outer Fabric A borders to the quilt, sides on first.



Finishing the Quilt

8. Layer the quilt with batting and backing and baste. Quilt in the ditch around borders and block patches. Quilt the Fabric A patches and borders as desired. Bind to finish the quilt.



Quilt Diagram

Seven Seas

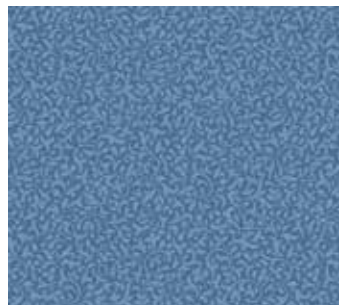
KATHY HALL



9300-B



9301-B



9302-B



9303-B



9304-B



9305-B



9306-B



9307-B



9308-B



9309-B1



9310-B



9311-B



9312-B



9313-B



9314-B



9315-B



9014-L

*Additional fabric
from 2020 Trinkits
by Kathy Hall*

All fabrics are used in quilt pattern.
Fabrics shown are 50% of actual size.

Free Pattern Download Available

andover • makower.uk

1384 Broadway New York, NY 10018
Tel. (800) 223-5678 • andoverfabrics.com

9/15/19